



Net Positive Conference 2015 Overview

January 22-23rd, 2015
San Francisco, CA
Hyatt Regency Embarcadero

Devin Graham, AIAS

Conference Agenda

- **South Bay Tour – Living Buildings**
 - Sacred Heart School, Atherton, CA
 - Packard Foundation, Palo Alto
- **Keynote Speakers**
 - Sandra Postel
 - Steven Strong
 - Amanda Sturgeon
- **Dinner Meet Up**
 - Café Claude with Eric Corey Freed
- **Educational Workshops**
 - Net Positive Retrofits
 - Net Positive Strategies for SF Chinatown
 - Integrated Process for Net Positive Results

Sacred Heart School, Atherton CA



STEVENS LIBRARY



Sacred Heart School Stevens Library

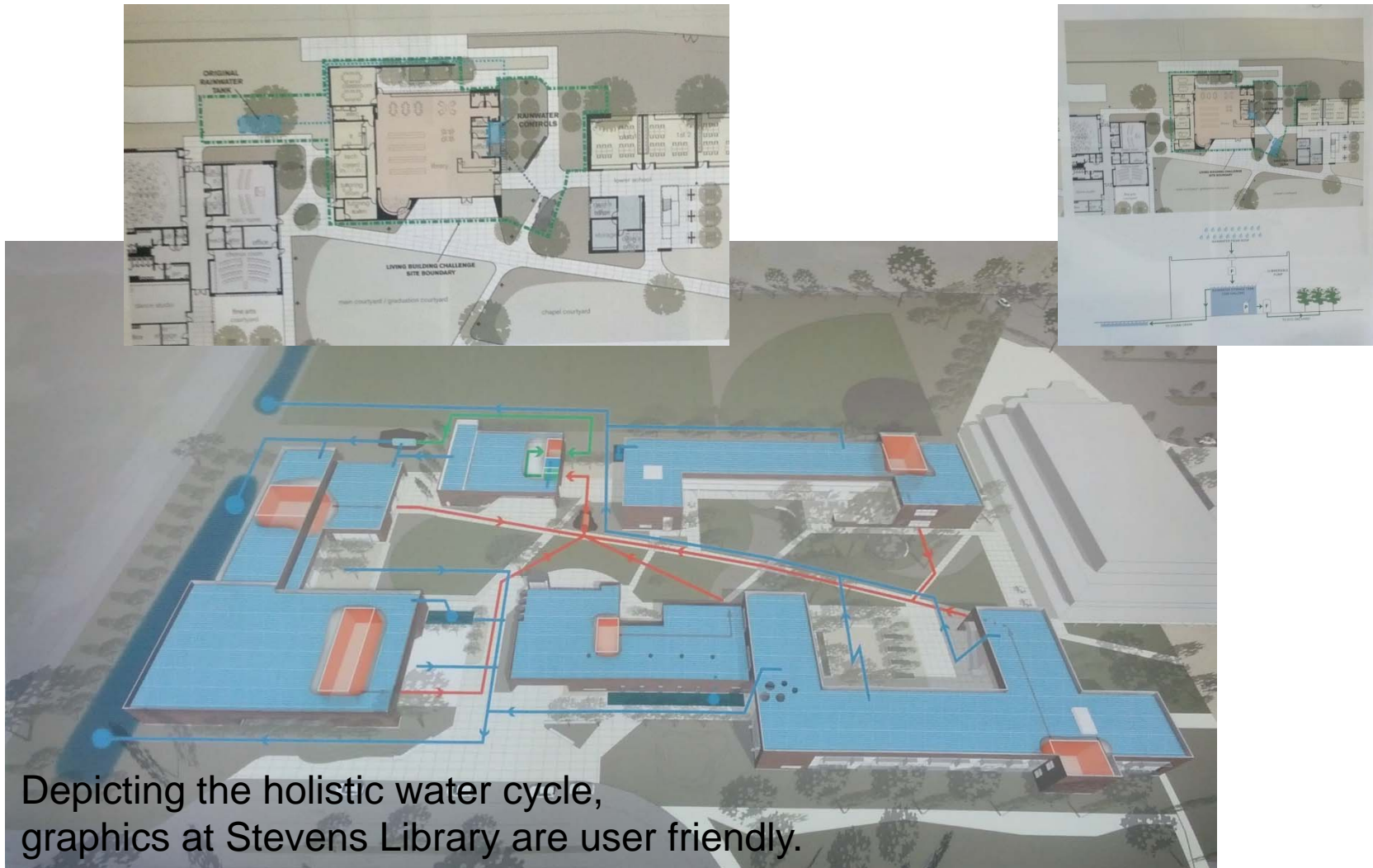


Campus Landscape Management



Goat Gardeners do not release harmful emissions and are a fun distraction!

Educational Graphics



Celebrated Water System



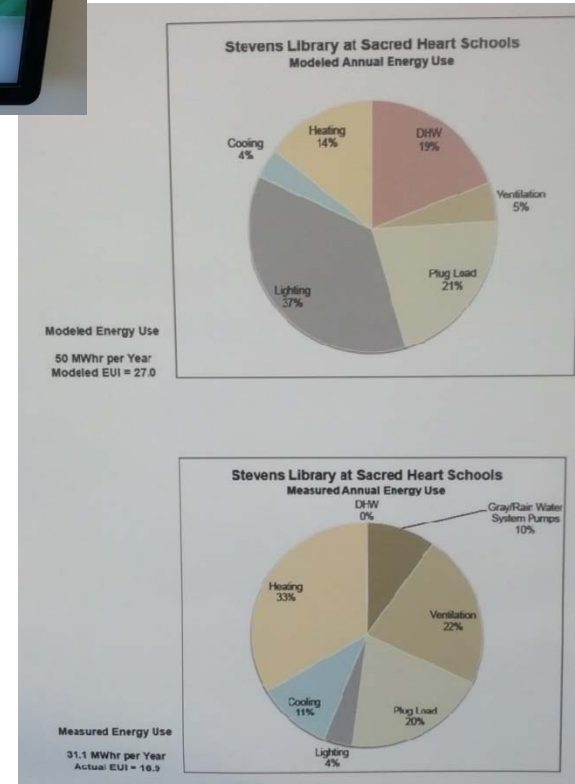
Educational Graphics



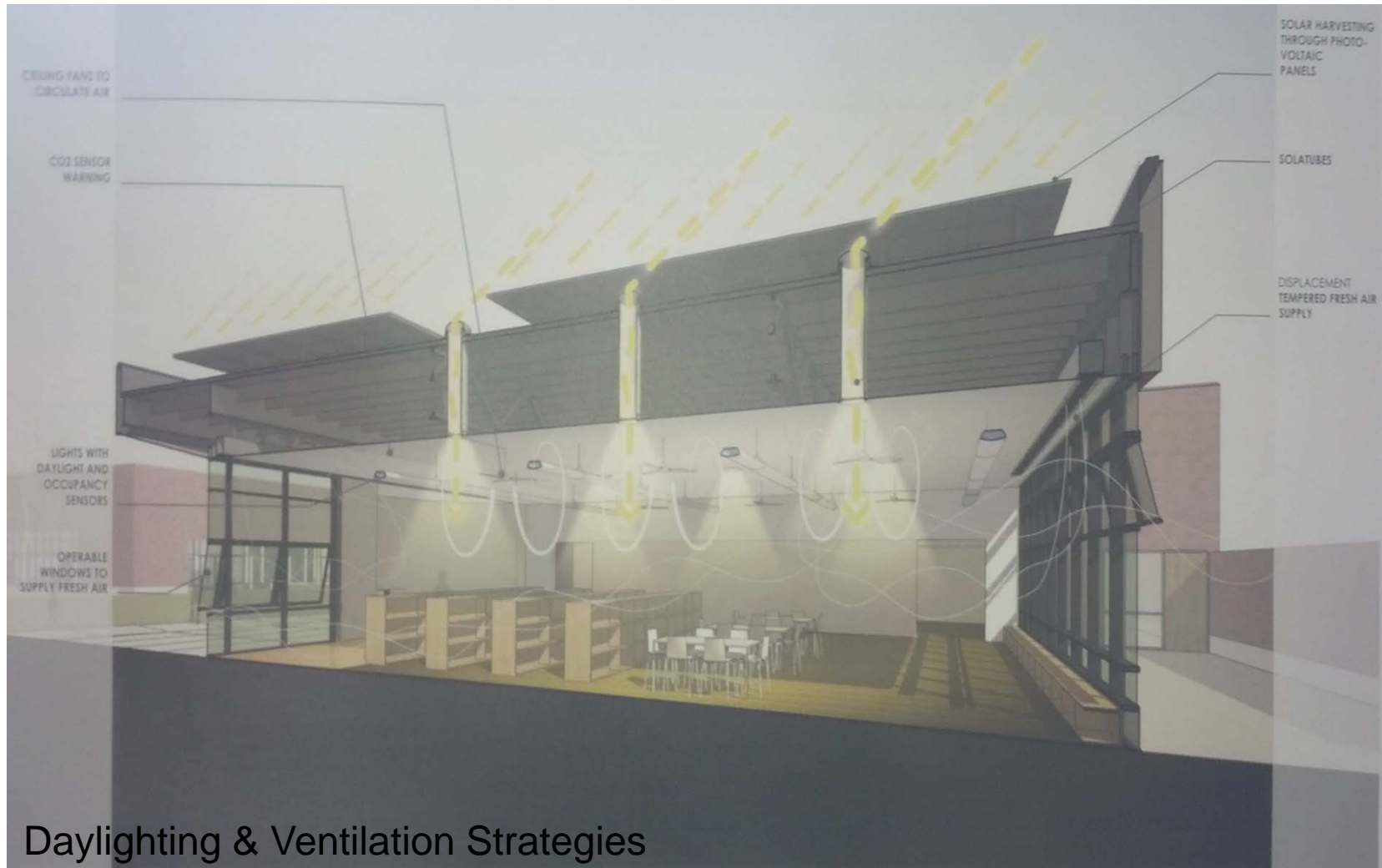
Resource use tracking in real time.



Posted in public, energy and water use data shows the performance of the building and gets student interaction.

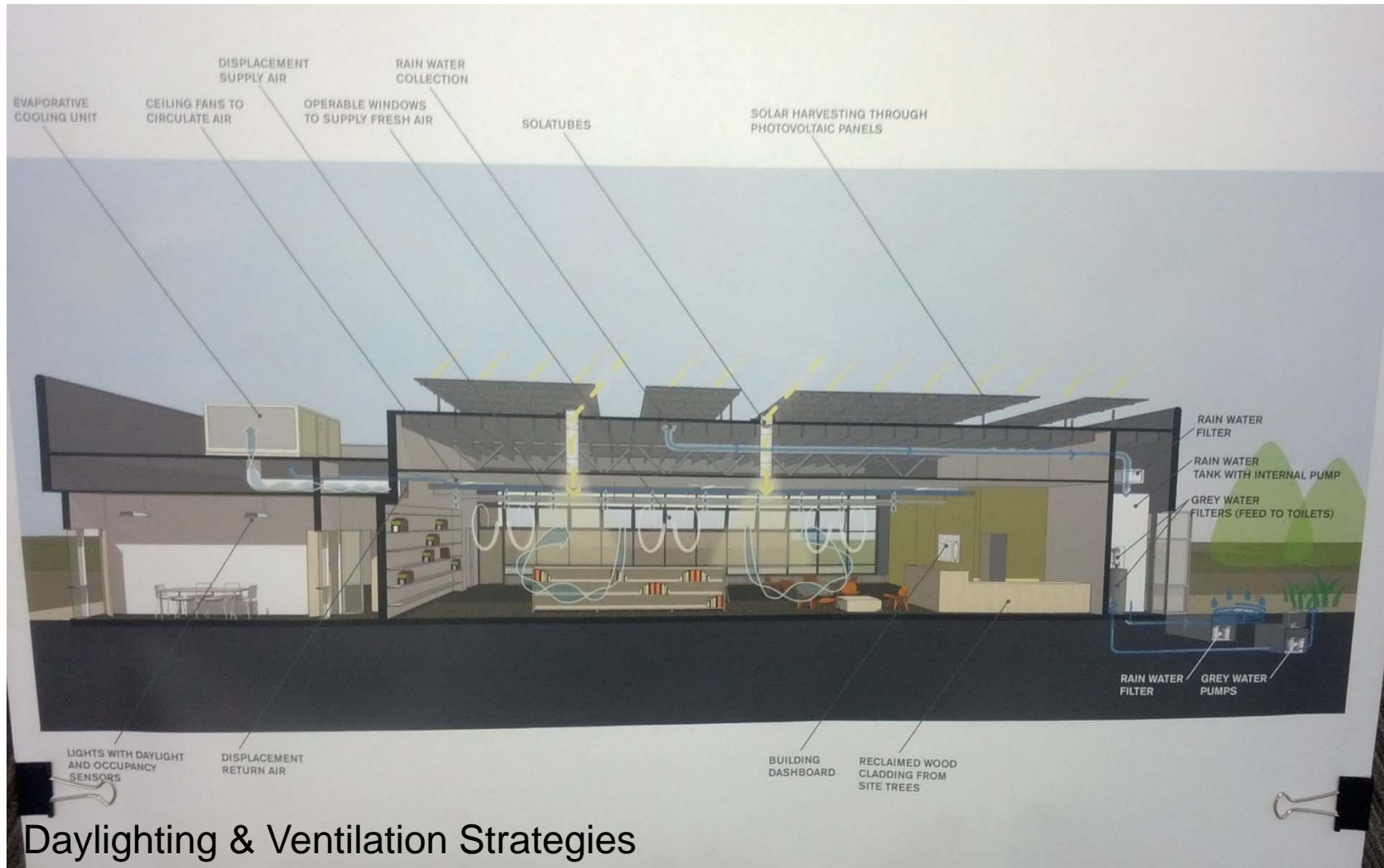


Educational Graphics



Daylighting & Ventilation Strategies

Educational Graphics



Daylighting & Ventilation Strategies

Permaculture Citrus Garden & Adapted Landscape



Packard Foundation, Palo Alto, CA

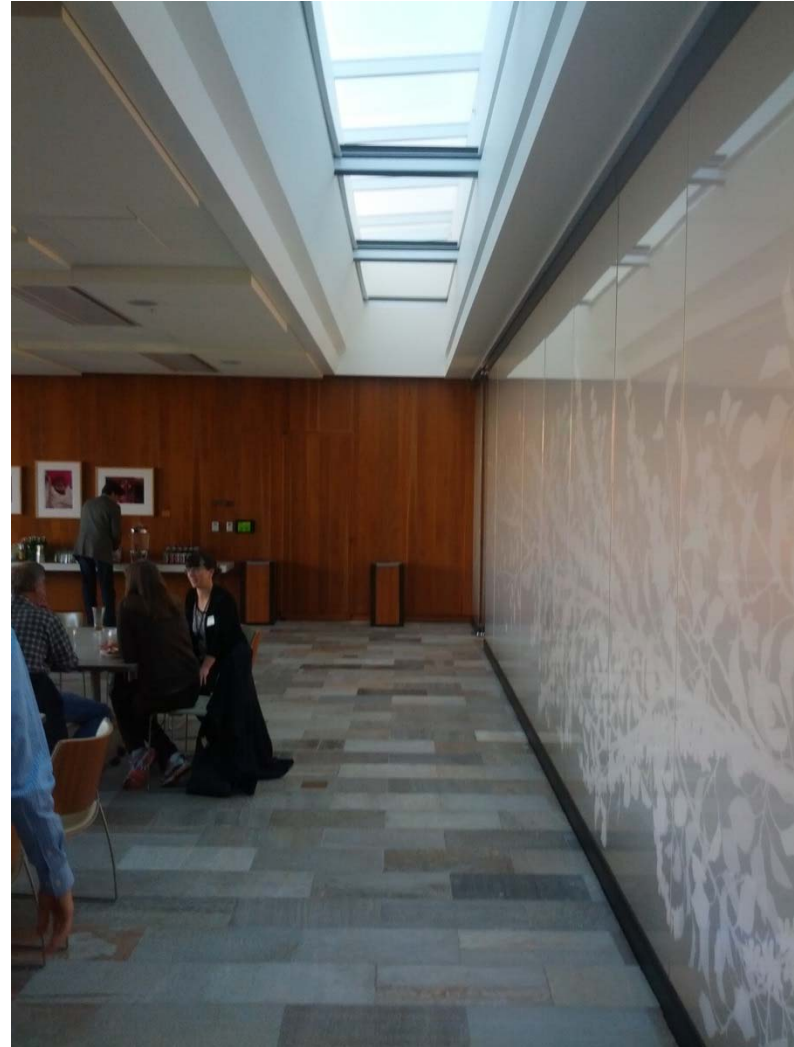
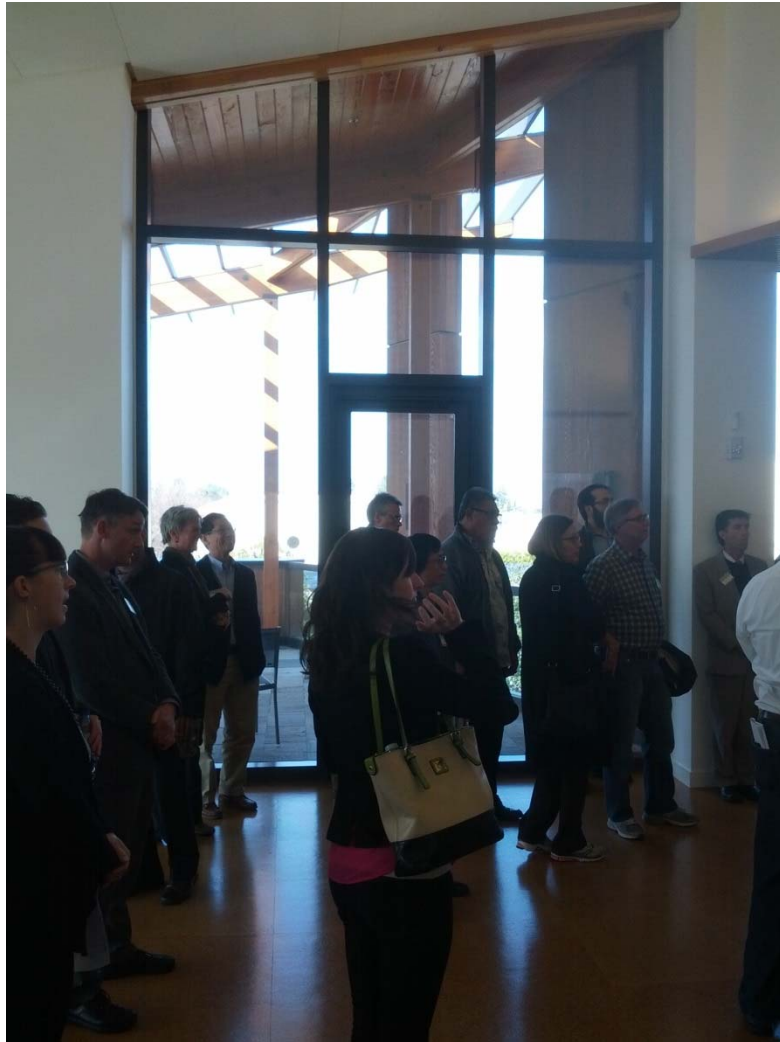
The David & Lucile Packard Foundation



San Francisco Modern Style



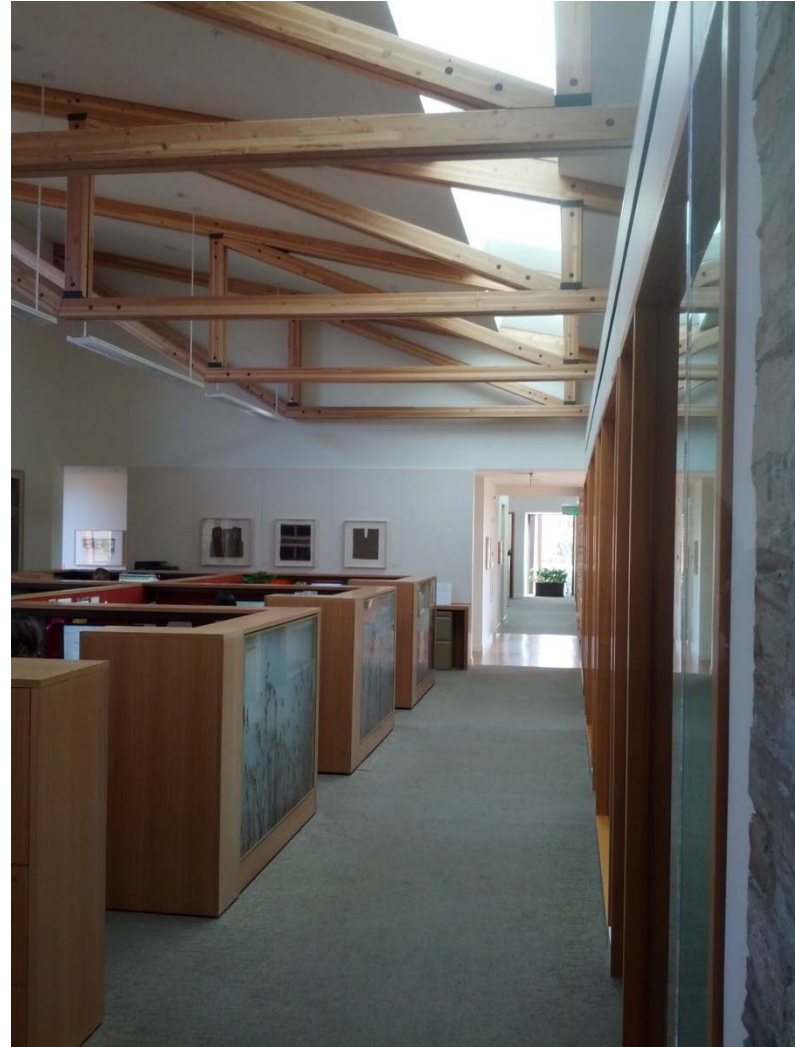
Natural Sunlight



Natural Daylit Circulation



Natural Daylit Offices



Courtyard Design



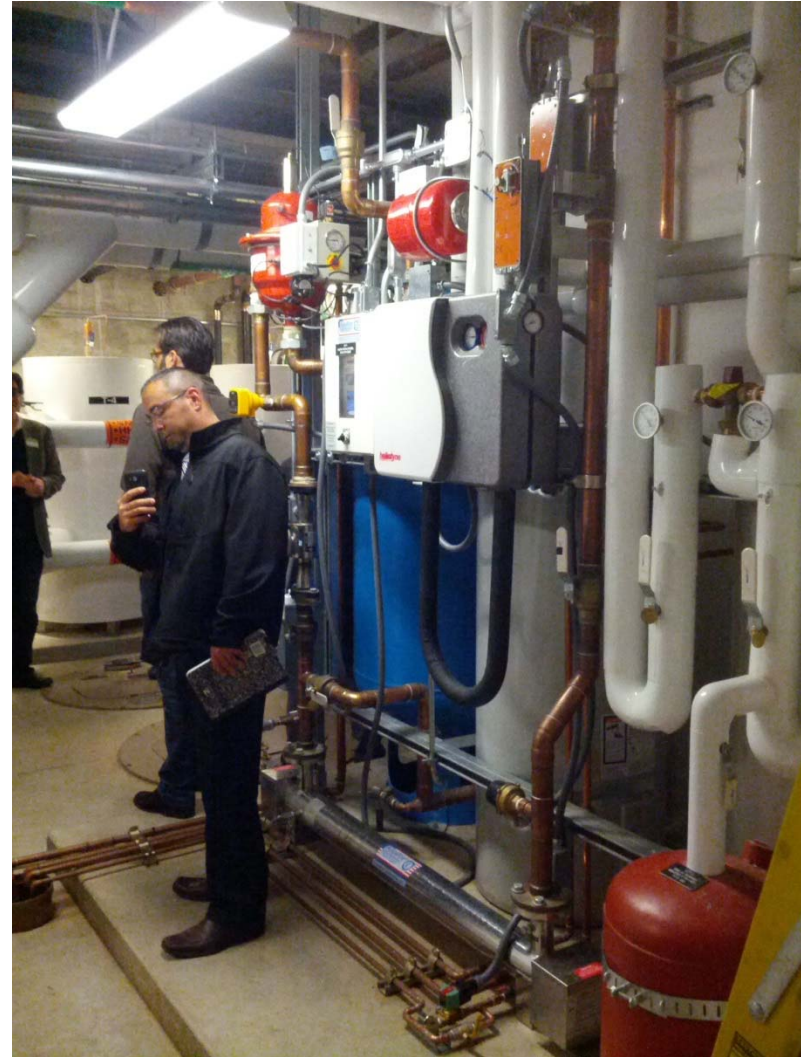
Natural Ecosystem Landscape



Labelled Dedicated Waste Area



The Mechanical Guts



Tracking the Path of Net Energy

NOW 54 HIGH 61 LOW 45 FORECAST Mostly Cloudy

Tracking the Path of Net Energy

In order to reduce greenhouse gas emissions, our headquarters is designed to produce enough energy to meet or exceed its annual needs.

The graph to the right shows cumulative energy surplus or deficit over each year beginning July 17th.

For the 2013-2014 period the building provided approximately 81,185 kWh of surplus energy to the PG&E grid. To date for the 2014-2015 period the building has provided 13,509 kWh of surplus energy to the PG&E grid.



Net Energy: Total Kilowatt hours of electricity produced by the solar panels minus the amount consumed by all systems in the building.



Keynote Speakers



Sandra Postel

- Director & Founder, Global Water Policy Project
- Co-creator of Change the Course, the national freshwater conservation and restoration campaign
- **Advocating for restoration of Earth's natural water systems to ensure our sustained water survival.**



Amanda Sturgeon

- Executive Director, International Living Future Institute
- Prominent in the Pacific Northwest design community, she was a founding member of the Cascadia Region Green Building Council.
- Reinforcing the need for net positive vigilance in advocacy, Amanda has bright hopes for the future, but only if we **act now**.



Steven Strong

- President of Solar Design Associates, LLC
- With project experience all over the world on Net-Zero and building integrated solar systems, he is a leading advocate for a Net Positive Future
- “We need to decide which way we are going because the present road ends.”



Net Zero Energy Success Formulae

- **Retain the Right Architect!**
- Has Demonstrated Net-Zero Success
- Highly Collaborative
- Whole Systems Thinker
- Adept in Required Technology
- Preferably Local



Educational Sessions

- Building the Case for Net Positive Energy Retrofits
- Net-Zero Efficiency and water Strategies for Chinatown , SF: Efficiency meets Equity
- Method, Not Matter: How an Integrative Process Yields Net Positive Results

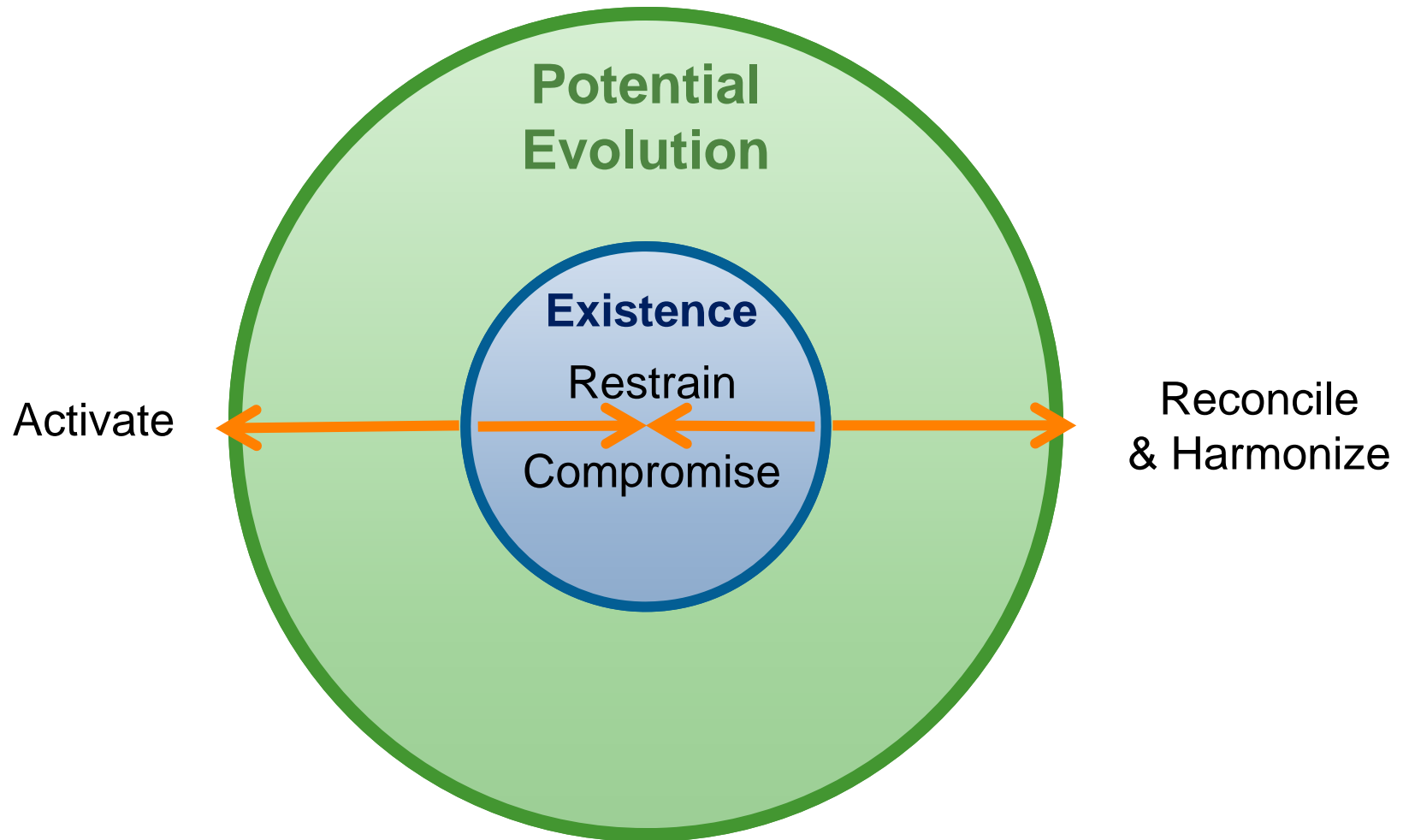
Integrative Systems Thinking

- Levels of Communication

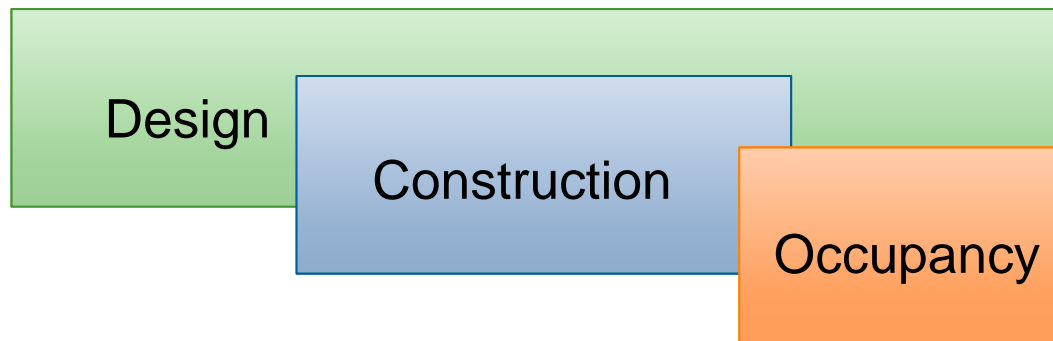
<u>Activity in Project</u>	<u>% Retained in Memory</u>
Develop	70%
Exchange	40-50%
Share	20-30%
Tell	10%

- **SYNERGY and COLLABORATION!**

Potential = Reconciliation



Paradigms: Old and New





THANK YOU!